

# exkal

 FOR FUTURE GENERATIONS

GAMA 

## MURALES GAMA 1 ALPES CLEAR

GAMA 1 / RANGE 1 / GAMME 1 / BEREICH 1

SOSTENIBLE Y MONOCASCO / SUSTAINABLE AND MONOBLOCK /  
DURABLE ET MONOCOQUE / NACHHALTIG UND MONOBLOCK

+ VISIÓN PRODUCTO / PRODUCT VISIBILITY / VISIBILITÉ PRODUITS /  
PRODUKPRÄSENTATION

ERGONOMÍA & PUERTA BATIENTE / ERGONOMY & HINGED DOORS /  
ERGONOMIE & SWING PORTES / ERGONOMIE & DREHTÜR

OPTIMIZACIÓN ESPACIO VENTA / RETAIL FOOTPRINT  
OPTIMIZATION / RETAIL FOOTPRINT OPTIMISATION /  
VERKAUFSFLÄCHENOPTIMIERUNG

+ ÁREA TOTAL EXPOSICIÓN / TOTAL DISPLAY AREA / TDA / TDA



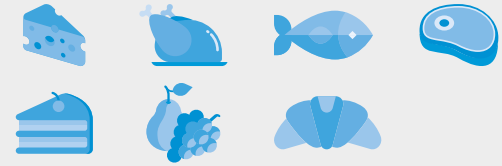
**CLEAR**  
MURALESALPES

[exkalsa.com](http://exkalsa.com)

# GAMA 1

MURALES / MULTIDECKS /  
VERTICAUX / VERTIKALE

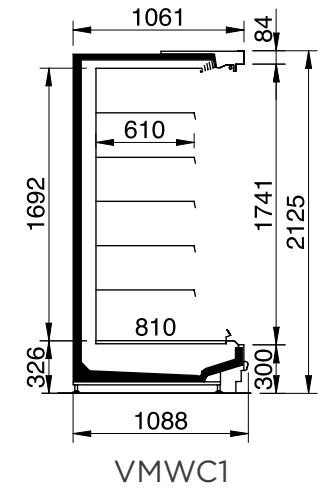
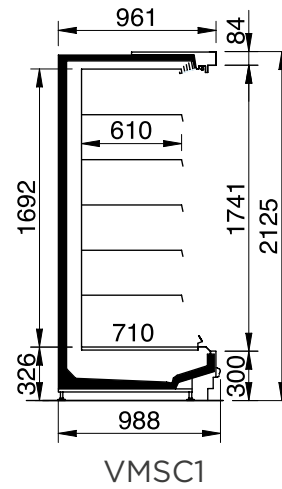
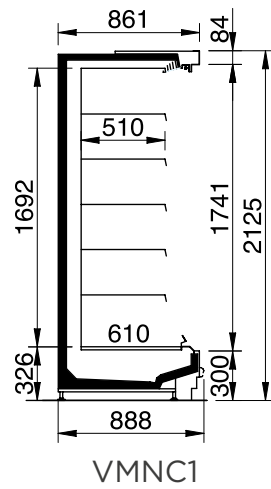
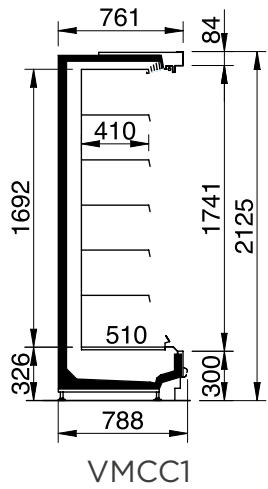
# 3M1

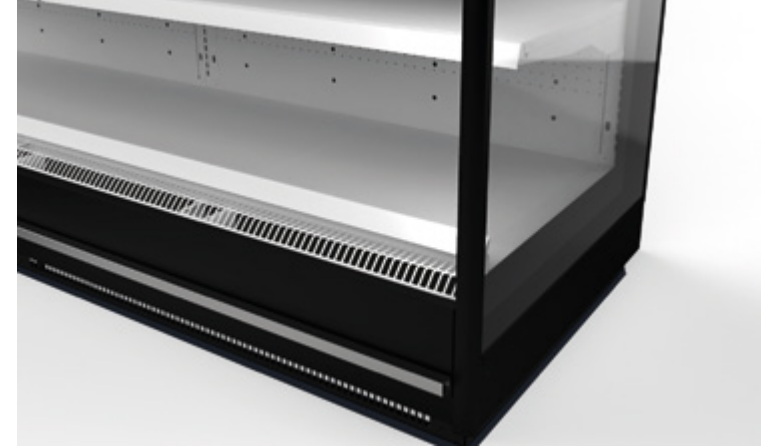


## GAMA 1 / RANGE 1 / GAMME 1 / BEREICH 1

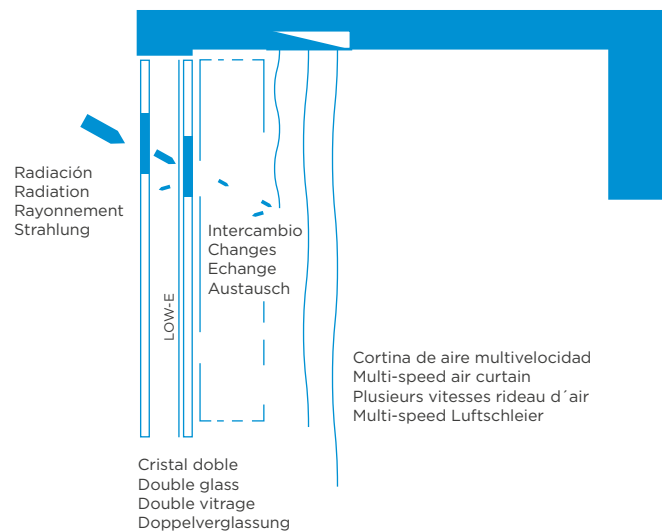
A T G	D			3			4			5			6			C		
	2			3			4			5			6			C		
mm	1250			1875			2500			3125			3750			C		
	TDA	Vol	Suf	TDA	Vol	Suf	TDA	Vol	Suf	TDA	Vol	Suf	TDA	Vol	Suf	TDA	Vol	Suf
	m <sup>2</sup>	l	m <sup>2</sup>	m <sup>2</sup>	l	m <sup>2</sup>	m <sup>2</sup>	l	m <sup>2</sup>	m <sup>2</sup>	l	m <sup>2</sup>	m <sup>2</sup>	l	m <sup>2</sup>	m <sup>2</sup>	l	m <sup>2</sup>
VMCC1	2,23	888	3,19	3,34	1331	4,76	4,45	1755	6,38	5,56	2219	8	6,68	2663	9,57	4,23	1320	4,78
VMNC1	2,23	1100	3,96	3,34	1650	5,94	4,45	2200	7,92	5,56	2750	9,9	6,68	3300	11,88	4,59	1496	5,4
VMSC1	2,23	1313	4,68	3,34	1969	7,02	4,45	2625	9,36	5,56	3281	11,7	6,68	3938	14,04	4,9	1650	5,94
VMWC1	2,35	1338	4,82	3,53	2006	7,23	4,7	2675	9,64	5,88	3344	12,05	7,05	4013	14,46	5,3	1848	6,68

TDA = Área Total de Exposición / Total Display Area / Zone d'affichage totale / Gesamtausstellungsfläche • Vol = Volumen neto / Net volume / Volume net / Nettovolumen • Suf = Superficie de exposición / Exhibition surface / Surface d'exposition / Ausstellungsfläche.  
Best energy class model. More information at EPREL or contact our Sales Department.

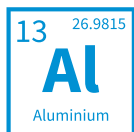
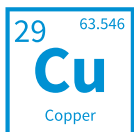
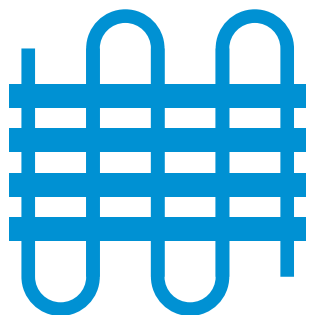




**ADS AIR DISTRIBUTION SYSTEM**



**EVAPORATOR**



**MONOBLOCK**



# exkal

FOR FUTURE GENERATIONS

Pol. Ind. El Campillo, C/A N° 1, 31340, Marcilla, Navarra  
 (España - Spain)  
 +34 948 708 292 | exkalsa@exkalsa.com | [exkalsa.com](http://exkalsa.com)

**exkal**  
CONCEPT

[exkalconcept.com](http://exkalconcept.com)

**horexkal**



[horexkal.com](http://horexkal.com)

