

exkal

e FOR FUTURE GENERATIONS

— CONSERVADORA PLUGIN **GFC**

+ VISIÓN PRODUCTO / PRODUCT VISIBILITY / VISIBILITÉ PRODUITS /
PRODUKPRÄSENTATION

ERGONOMÍA / ERGONOMY / ERGONOMIE / ERGONOMIE

OPTIMIZACIÓN ESPACIO VENTA / RETAIL FOOTPRINT
OPTIMIZATION / RETAIL FOOTPRINT OPTIMISATION /
VERKAUFSFLÄCHENOPTIMIERUNG

+ ÁREA TOTAL EXPOSICIÓN / TOTAL DISPLAY AREA / TDA / TDA



CONSERVADORA / ISLANDS / CONSERVATEUR / INSELN

3L1

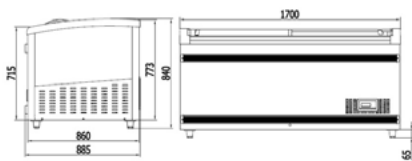


		170			2108			220			250			195C			2142C			
mm		1700			2108			2200			2500			1940			2142			
		TDA	Vol	Suf	TDA	Vol	Suf	TDA	Vol	Suf	TDA	Vol	Suf	TDA	Vol	Suf	TDA	Vol	Suf	
		m ²	l	m ²	m ²	l	m ²	m ²	l	m ²	m ²	l	m ²	m ²	l	m ²	m ²	l	m ²	
A T G	C	GCFC	0,97	411	1,12	-	-	-	1,3	577	1,48	1,5	677	1,7	1,19	452	1,18	-	-	-
A T G	D	GCFCD	-	-	-	1,65	672	1,69	-	-	-	-	-	-	-	-	-	1,66	672	1,69
A T G	C	GCFDA	-	-	-	-	-	-	1,51	833	1,71	-	-	-	-	-	-	-	-	-

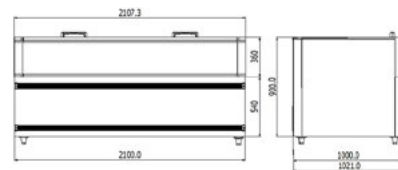
TDA = Área Total de Exposición / Total Display Area / Zone d'affichage totale / Gesamtausstellungsfläche • Vol = Volumen neto / Net volume / Volume net / Nettovolumen • Suf = Superficie de exposición / Exhibition surface / Surface d'exposition / Ausstellungsfläche

SECCIONES / SECTIONS / SECTIONS / SCHNITTE

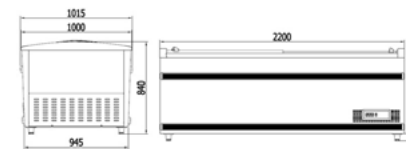
SOSTENIBLE / SUSTAINABLE / DURABLE / NACHHALTIG



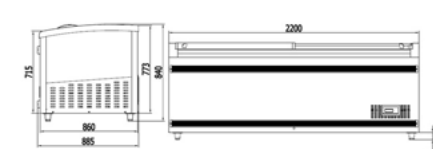
GCFC-170 AD



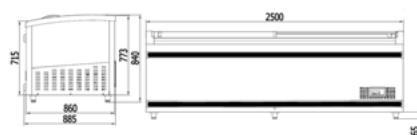
GCFCD-2108



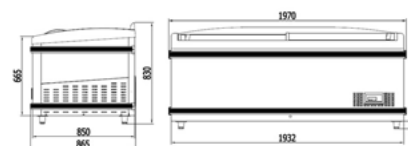
GCFDA-220



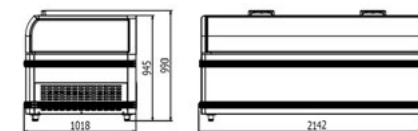
GCFC-220 AD



GCFC-250AD

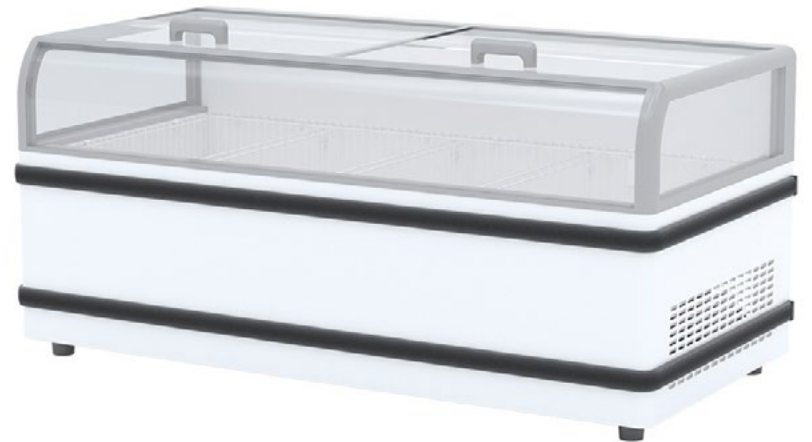


GCFC-195C AD



GCFCD-2142 C

Best energy class model. More information at EPREL or contact our Sales Department.



exkal

FOR FUTURE GENERATIONS

Pol. Ind. El Campillo, C/A N° 1, 31340, Marcilla, Navarra
(España - Spain)
+34 948 708 292 | exkalsa@exkalsa.com | exkalsa.com

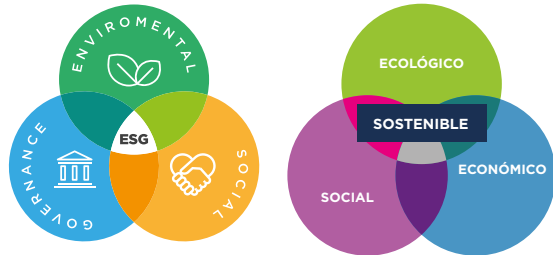
exkal
CONCEPT

exkalconcept.com

horexkal



horexkal.com




**OBJETIVOS
DE DESARROLLO
SOSTENIBLE**



SR-0009-ES



SI-0011/2021



ER-0149/2011



SST-0022/2011



GA-2011/0074

